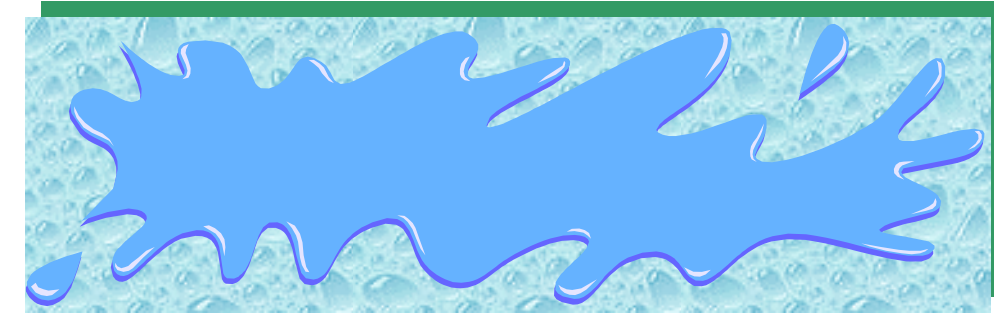
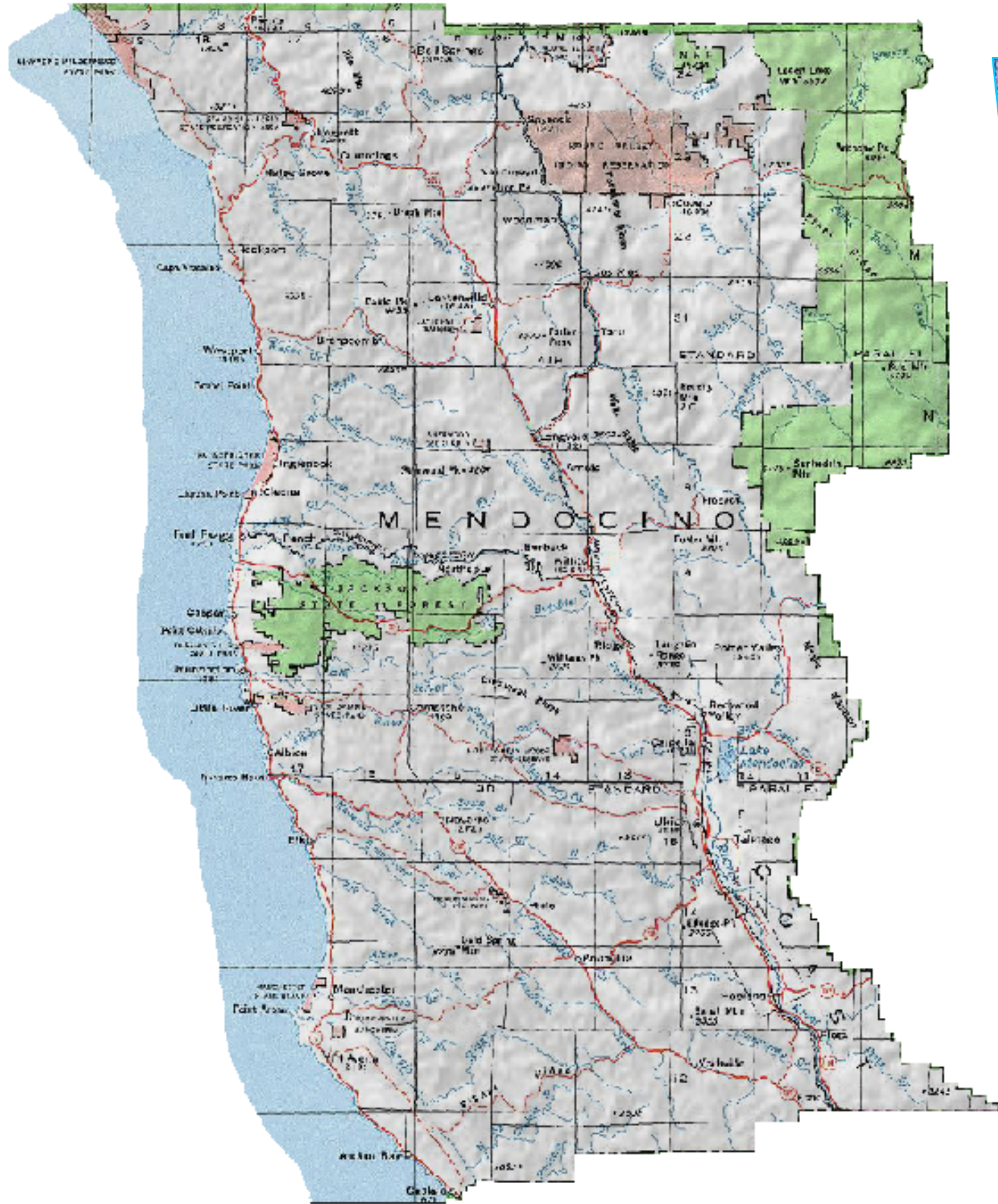


# Water Diversion Report for Mendocino County



*Speak up for those who cannot speak for themselves...*

*...speak up and judge fairly.*

*Proverbs 31: 8-9 NIV.*



**Prepared for:  
Mennen Environmental Foundation  
PO Box 29903  
San Francisco, Calif. 94129**

**Prepared by:  
The Watershed Associate  
PO Box 3477  
Napa, Calif. 94558**

**All information obtained from the State Water Resources Control Board**

Thank you to the following people:

Jerry Johns - Assistant Division Chief, State Water Resources Control Board  
Joan Jurancich - Environmental Specialist, State Water Resources Control Board  
Alana Gibbs – Engineer, State Water Resources Control Board  
Janelle Fortner – Associate WRC Engineer, State Water Resources Control Board

**\*\*A special thank you to the Mennen Environmental Foundation for their support and their vision.\*\***

**SCOPE AND LIMITATIONS OF THIS REPORT**

This report presents selected data from the surface water appropriation permit files maintained by the California State Water Resources Control Board for all surface water appropriation permits issued by the Board in Mendocino County through 3/22/01 and all surface water appropriation permit applications pending in Mendocino County as of 3/22/01. The research presented here was completed on 6/30/01. Permit applications with a date in either the “Permit Date” or “License Date” column are issued. Applications with no date in the “Permit Date” column are pending, and confer no right to appropriate or use surface water. The values for “maximum direct diversion” and “maximum storage annually” provide are “not to exceed” values. Actual use could be less than these values.

Part I presents all applications organized alphabetically by “contact/owner.” Part II presents the same complete list of applications organized by source streams.

**Riparian claims**

Riparian owners may appropriate and use surface water under a claim of riparian right and are not required apply for an appropriation permit or to notify the SWRCB of the quantity of water diverted or used. Since many riparian owners do not file a “Statement of Use” with the State Water Resources Control Board, this report does not include surface water diversions under claim of riparian right.

**Codes, abbreviations and colors used:**

Blue & Green colors represent an application that has numerous locations for points of diversion. When there are numerous locations, as you will see in part II, the creek listed most will be used. When there are Unnamed Sources and Unnamed Tributary’s it will be listed into the next named creek. In Part II, the color pink is used for the totals for each creek.

**DIRECT DIVERSION** means the diversion of water for immediate use or diversion into a sump, holding reservoir, or tank from which it will be used at a more convenient rate if held less than 30 days.

**STORAGE** means the collection of water in a reservoir when there is surplus flow in the stream source for use during a time of deficient streamflow (generally, more than 30 days).

California  
State  
Water  
Resources  
Control  
Board

- ADAMS CREEK
- AETNA CREEK
- AMERICAN CANYON CREEK
- ANDERSON CANYON
- ANDERSON CREEK
- ANGWIN CREEK
- ARROYO SECO
- BALE SLOUGH
- BARTON CREEK
- BATEMAN CREEK
- BEAR CANYON
- BELL CANYON
- BELL CREEK
- BITER CREEK
- BLOSSOM CREEK
- BROWNS VALLEY CREEK
- BRUSHY CANYON
- BUCK MOUNTAIN LAKE
- BUCK MOUNTAIN SPRING
- BUCKSNORT CREEK
- BUHMAN CREEK
- BURTON CREEK
- BUTTE CANYON
- BUTTS CANYON
- BUTTS CREEK
- CAPELL CREEK
- CARNEROS CREEK
- CEDAR CREEK
- CEMENT CREEK
- CHILES CREEK
- CHIMNEY CREEK
- CLEAR CREEK
- CONGRESS VALLEY CREEK
- CONN CREEK
- CORDELIA SLOUGH
- CRIPPLED BUCK RESERVOIR
- CYRUS CREEK
- DARDON CANYON
- DECKER CANYON
- DEVILHEAD ROAD SPRING
- DIAMOND CREEK
- DRY CREEK
- DUVALL LAKE
- DYER CREEK
- EAST BULL CANYON
- EAST MITCHELL CANYON
- ELDER CREEK
- ENGLISH CREEK
- ETICUERA CREEK
- FAGAN CREEK

**IRRIGATION** means the use of water for agricultural crops, commercial nurseries, or for maintenance of large areas (greater than one-half acre per establishment) of lawns, shrubbery, or gardens.

**DOMESTIC** means the use of water in homes, resorts, motels, organization camps, and campgrounds, including incidental watering of domestic stock for family use and the irrigation of up to one-half acre of lawn, ornamental shrubbery, or garden at any single establishment.

**STOCKWATERING** means the use of water for commercial livestock, including hosing out dairy barns. Water for domestic stock (not for commercial use) is a domestic use.

**RECREATIONAL** means the use of water for boating, swimming or fishing. This use includes water collected to storage and either kept in the reservoir or released downstream for these purposes. Reservoirs containing water to be used solely for recreational purposes at the reservoir should not be unreasonably large.

**MUNICIPAL** means all uses common to the municipal water supply of a city, town, or other similar population group, whether or not the area is incorporated, plus incidental uses for any beneficial purpose.

**HEAT CONTROL** means any application of water for the prevention of heat damage to crops.

**FROST PROTECTION** means the use of water for the protection of crops from frost damage.

**INDUSTRIAL** includes many uses that serve the needs of commerce, trade, or industry not covered by municipal use.

**MINING** includes the use of water in mining processes, such as placer mining, drilling, and milling, or concentration of ore.

**POWER** includes the generation of hydroelectric and hydromechanical power. Power use does not apply unless water is used to drive a device such as a turbine.

**FISH AND WILDLIFE PRESERVATION AND/OR ENHANCEMENT** is use of water, generally stored in a reservoir and later released downstream, to protect or support habitat or other benefits for fish and wildlife. The use of water for raising fish or other organisms for scientific purposes or for planting in a stream system is included under this use.

**AQUACULTURE** is the use of water for the raising of fish or other organisms for commercial purposes where the fish or organisms will not be released into a stream system.

**WATER QUALITY** includes storage of water for later release or otherwise diverted to protect or enhance the quality of other waters or for beneficial uses.

#### **RECORD TYPES**

- A - Appropriative
- C - Stockpond
- D - Small Domestic Reg
- E - Cert. of Right - Power
- F - Federal Filings
- G - Groundwater Recordation
- J - Adjudicated Right
- K - Complaint
- P - Pre-1914 Claim of right
- R - Riparian Claim of Right
- S - Statement of Div & Use
- T - Temporary Permit
- Z - Section 12 File

# Local water rights

- FOLEY CREEK
- GARNETT CREEK
- GORDON VALLEY CREEK
- GOSLING CANYON
- GREEN CANYON
- HARDIN CREEK
- HARRIS CANYON
- HAUG CREEK
- HOOPER CREEK
- HORSESHOE BEND
- HOWELL CREEK
- HUDEMAN SLOUGH
- HUICHICA CREEK
- HUNTING CREEK
- HUSMAN CANYON
- JACKSON CREEK
- JAMES CREEK
- JERICO CANYON
- JOHNSON CANYON
- KIMBALL CREEK
- KNOXVILLE CREEK
- KREUZER CREEK
- LAKE BERRYESSA
- LAKE HENNESSEY
- LEDGEWOOD CREEK
- LINCOLN CREEK
- LION CANYON
- LONG CANYON
- LOVE CREEK
- MAPLE SPRING
- MARKLEY CANYON
- MAXWELL CREEK
- MIDDLE CREEK
- MILL CREEK
- MILLIKEN CANYON
- MILLIKEN CREEK
- MONTGOMERY CREEK
- MOORE CREEK
- MUD SLOUGH
- MURPHY CREEK
- MUSCOVE CREEK
- MYSTERIOUS CREEK
- NAPA CREEK
- NAPA RIVER
- NAPA SLOUGH
- NASH CREEK
- NEVEDA CREEK
- NORTH SLOUGH
- OAK MOSS CREEK
- OIL WELL CANYON CREEK

**RECORD TYPES continued**

UNST - Unnamed Stream  
UNSP - Unnamed Spring  
UNCR - Unnamed Creek  
UNDR - Unnamed Drain  
UNSL - Unnamed Slough

N - North  
S - South  
E - East  
W - West

**CFS** - Cubic Feet per second

1 cubic foot per second is a rate of flow passing any point equal to a volume of one cubic foot of water every second.

One is equivalent to:

- = 7.48 U.S. gallons per second
- = 448.8 U.S. gallons per minute
- = 646,317 U.S. gallons per day

**AC-FT** - Acre feet/ Annually

1 acre-foot is the amount of water which will cover 1 acre to a depth of 1 foot.

One is equivalent to:

- = 43,560 cubic feet
- = 325,851 U.S. gallons

**GPD** - Gallons per day

1,000,000 U.S. gallons per day

is equivalent to:

- = 1.55 cubic feet per second
- = 43.81 liters per second
- = 3.07 acre-feet per day

**ONE THEORETICAL HORSEPOWER** is calculated by multiplying the vertical fall of water in feet by the rate of waterflow in cubic feet per second and dividing the product by 8.8.

It is equivalent to:

- = 550 foot-pounds per second
- = 746 Watts

**List of water records**

- POPOCK CREEK
- POTASSIUM CREEK
- PUTAH CREEK
- RECTOR CREEK
- REDWOOD CANYON
- REDWOOD CREEK
- RIGHT-HAND CANYON
- RITCHIE CREEK
- ROBINSON CREEK
- SAFFOLD CREEK
- SAGE CREEK
- SARCO CREEK
- SEGASSIA CANYON
- SHEEY CREEK
- SIMMONS CANYON
- SIMMONS CREEK
- SNELL CREEK
- SODA CREEK
- SOSCOL CREEK
- SOUTHFORK TULLY CANYON
- SPENCER CREEK
- ST HELENA CREEK
- STANLEY CREEK
- STEEL CANYON
- STONE CORRAL CREEK
- STONEY CREEK
- STORMAN SPRING
- SUISUN CREEK
- SULPHUR CREEK
- SWARTZ CREEK
- THE CABIN SPRING
- TIN CAN CANYON
- TOLL CANYON
- TROUT CREEK
- TROUTDALE CREEK
- TULUCAY CREEK
- WALTERS SPRING
- WASHINGTON CREEK
- WATER CANYON
- WEST BULL CANYON
- WEST MITCHEL CANYON
- WHITE CREEK
- WILD HORSE CREEK
- WING CANYON
- WOOD CANYON
- WOODEN VALLEY CREEK
- WRAGG CREEK
- YORK CREEK
- ZIM ZIM CREEK